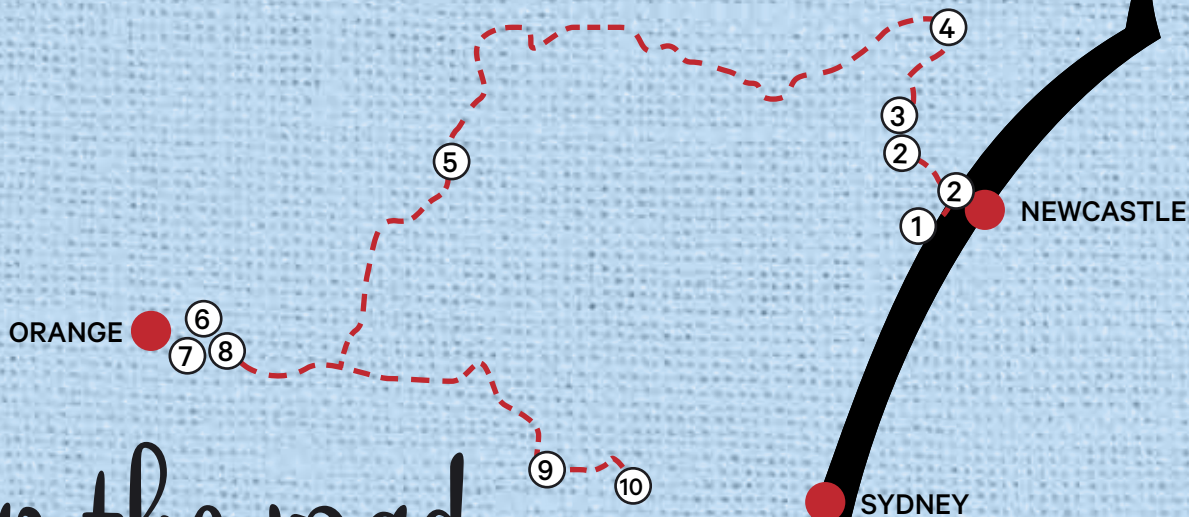


On the road

NSW BLUE MOUNTAINS,
CENTRAL WEST & HUNTER

TOUR GUIDE

- 1 GATESHEAD 2 NEWCASTLE & EAST MAITLAND
3 BOLWARRA HEIGHTS 4 DUNGOG 5 RYLSTONE 6 ORANGE
7 ORANGE 8 ORANGE 9 KATOOMBA 10 GLENBROOK



1. Gateshead BATIK OETORO



Where's Gateshead: On the southern side of Newcastle.

Where in Gateshead: Unit 3, 11 Nevin Close. We're in an industrial area, only two blocks from the highway – just turn off at Charlestown Toyota.

Who plays host: Lynne is there every day, with occasional assistance from 'Tubby' (dear husband) and Britteny (daughter).

Worth visiting because: We sell colour! Dyes, fabric paints, marbling inks, natural dyes, fabric crayons and Texas, gutta resist, more dyes, and dyeing-related products, including chemicals. If you want to venture into the world of creating your own fabrics with dyes, fabric paints and other mediums, you've come to the right place. You can hand dye your threads or fabric, print your own fabric, try batik, shibori or silk painting – we really

have everything you need, and we can answer all your questions and provide instructions, too. Even if it is as simple a project as getting those faded jeans back to black – we have that, too. I have a lifetime of experience with textiles and I am more than happy to share. I was taught the ladylike accomplishments of hand embroidery and crochet at an early age, and then I really went off on a tangent, dyeing cotton scraps with mulberries. My dyeing experience has come a long way since then, and I now have plenty of industry experience and tertiary qualifications, so you really are in the right hands with any and every question about the wonderful techniques of colouring fabric and fibre. We're open Mon-Fri 9am-4pm, closed weekends and public holidays.

What we recommend: All of it – although we may be a bit biased! Hot Colour fabric paint would be one of our most versatile products. It is fixed by ironing and works on nearly all fabrics. You can silk paint with it, do marbling, sun print, faux tie dye, colour washes on fabric as backgrounds for embroidery – the possibilities are endless. But if you are unsure where to start, don't worry, we have kits that have clear step-by-step instructions and include all the basic 'stuff' you need to get creating.

Address: 3/11 Nevin Close, Gateshead, NSW 2290

Phone: (02) 4943 8808 **Email:** sales@dyeman.com

Website: www.dyeman.com

2. Newcastle & East Maitland ZIG ZAG SEWING



Where're Newcastle & East Maitland: Take the M1 from Sydney and take the Newcastle off ramp. From there, you can either go to Newcastle or East Maitland.

Where in Newcastle & East Maitland: 57 Georgetown Road (Newcastle): Follow the link road to Newcastle, turn left at Turton Road, then turn right at Georgetown Road – it's the purple shop two minutes up the road. Shop 1, 4a Garnett Street (East Maitland): Follow the road to Greenhills, turn into Greenhills shopping centre. Go right at the roundabout and take the first right. We are right beside the NSW service centre.

Who plays host: Sally and the amazing team, Celia, Sharen, Kathy, Jenny, Austin, Nathan and Suzanne.

Worth visiting because: At Zig Zag Sewing, we're all passionate sewers and believe that all the ills of the world would be solved if everyone just started sewing! Our aim is to spark this passion in as many people as possible. Both of our stores carry a variety of different products, with our focus on sewing machines, overlockers and long-arm quilting machines. Our customers are like family to us: we even share in weddings, births and holidays. We feel that our passion combined with our knowledge of all things sewing adds value to your visit, where you get more than just your purchase. Our motto is: "If we don't know the answer, we will find out for you".

What we recommend: We carry the best brands of sewing machines and overlockers, which include Pfaff, Janome, Singer, Babylock, Handi Quilter (both sit-down as well as long-arm machines), Accuquilt cutters and the new Artistic Edge cutter. We also carry Elna presses.

Address: 57 Georgetown Road, Georgetown (Newcastle), NSW 2298. Shop 1, 4a Garnett Street, East Maitland, NSW 2323
Phone: Georgetown (02) 4960 2426, East Maitland (02) 4933 6800

Email: sales@zigzagsewing.com.au
Website: www.zigzagsewing.com.au

3. Bolwarra Heights LOTUS FABRICS

Where's Bolwarra Heights: Bolwarra is a beautiful leafy suburb of Maitland in the Hunter Valley. Not far from the historic town of Morpeth or the wine-growing region of Pokolbin in the Hunter Valley.

Where in Bolwarra Heights:

Visits by appointment only. Please use the contact details below to make an appointment.

Who plays host:

Louise Brown-Thomas

Worth visiting because: I specialise in batik and hand-dyed fabrics.

I have a substantial range of these fabrics on bolts as well as precut 2½in strip rolls, fat quarters, 10in and 5in squares. I also stock MasterPiece, King Tut and Bottom Line threads from Superior Threads and a range of 50-weight silk threads for hand or machine appliqué. I have been a Certified Shop for Quiltworx for three years and have their patterns in stock. I also run classes every week for any Quiltworx pattern you choose to make. Kits are also available.



What we recommend: Apart from my fabrics and Quiltworx patterns, I stock books and patterns from Edyta Sitar of Laundry Basket Quilts, Quiltsmart bags and patterns and patterns and kits from McKenna Ryan.

Address: Bolwarra Heights, NSW

Phone: (02) 4930 1182, 0407 248 644

Email: louise@lotusfabrics.com.au **Website:** www.lotusfabrics.com.au

4. Dungog CREATIVE CRAFTS & FABRICS

Where's Dungog: A cute little town, north of Newcastle and situated in the stunning Hunter region.

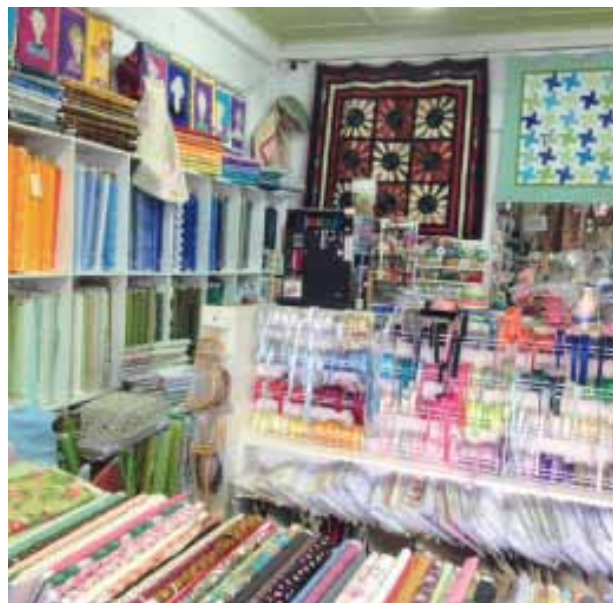
Where in Dungog: 120 Dowling Street. Dowling Street is the main shopping street through town with beautiful old buildings – you can't miss it!

Who plays host: Carol-Ann Cummings

Worth visiting because: Mine has been the go-to store in town for all sorts of crafty essentials since it was established in 2003. The shop is bursting with more than 1,000 bolts of fabric in a wide variety of fabrics, colours and styles, which also includes backings. I also have wool and acrylic felt, chenille, Minky, battings and Pellons. For your thread needs, I have you covered with Rasant, Signature, Bottom Line, Gutermann, Mettler, Madeira and DMC threads. For knitters and crocheters, I have yarns from Patons, Panda, Cleckheaton, Heirloom and Shepherd, and also a selection of accessories. My haberdashery range is pretty big. I have ribbons galore in a range of colours, along with ricrac and pompoms. I'm also a dealer for Janome sewing machines and have parts available. Classes are held on Tuesdays, Wednesdays and Thursdays as well as Thursday nights.

What we recommend: I have a selection of Victorian Textiles battings and templates along with Sue Daley papers.

Address: 120 Dowling Street, Dungog, NSW 2420



Phone: (02) 4992 1232, 0429 182 369

Fax: (02) 4992 3587

Email: creativecrafts1@bigpond.com

5. Rylstone HOMESTEAD SELECTION



Where's Rylstone: Situated in the Central Tablelands, just an hour from Lithgow and 40 minutes from Mudgee.

Where in Rylstone: 89 Home Hills Road. We are located on a farm, 20km out of town. From Rylstone, turn left at the hospital corner along the Glen Alice Road and travel along for 19km, then turn right into Home Hills Road. We're approximately 1km on the left.

Who plays host: Carol Christensen and her sister, Dianne, and mother, Margaret.

Worth visiting because: We'd love for you to visit our 'Shop in Shed'. Carol has 20 years of experience as a TAFE teacher and is always happy to help and give any advice you may need. We have an extensive range of the latest patchwork fabric and quilting supplies, including a large selection of fat quarters and panels. There is also an exclusive range of patterns and kits to choose from, and we like to offer many of our products at low prices. Being on a farm, we have a large selection of country fabrics, including many farm-animal designs. We also have a good range of novelty and Australiana fabrics. We also offer quilting classes for small groups, and accommodation is available in our stone cottage next door. Visits to the store are by appointment only, and bus trips and large groups are welcome; just call us first, as the farm is a working farm. We also offer a quilting service at low rates and fast return.

What we recommend: We have a great variety of bright and colourful fabrics suitable for appliqué, and a good range of children's panels and coordinating fabrics.

Address: 89 Home Hills Road, Rylstone, NSW 2849

Phone: (02) 6379 7670

Email: homesteadselection@gmail.com

6. Orange HOBBYSEW ORANGE



Where's Orange: It is situated in the beautiful Central West of NSW. Famous for wineries and many amazing restaurants, only three and a half hours from Sydney, and known as Australia's Colour City.

Where in Orange: 221 Peisley Street. We're just opposite the local IGA store: we're hard to miss!

Who plays host: Patricia Cole, supported by her friendly staff members, Kate, Toni, Belinda and Ronda.

Worth visiting because: Come on in and check out our wide and varied range of quilting fabrics, jelly rolls, layer cakes and charm packs. Designers include French General, Me and My Sister, Blackbird Designs, Timeless Treasures and many more. We stock hand- and machine-embroidery threads for all of your stitching needs. Custom quilting rulers can be made to your requirements as well as paper templates. We also have a large range of haberdashery, buttons, quilting accessories and services all makes and models of sewing machines and overlockers, and we are the official dealers for Bernina, Brother and Janome sewing machines, overlockers and accessories. Large groups are welcome and, by prior arrangement, we will stay open after hours to accommodate a visit.

What we recommend: Our Sit and Sew classes are happy, chatty and loads of fun. We have a Borders Workshop, and Michelle Marvig will be visiting us in July. We have plenty more exciting things in the works, so follow us on Facebook at www.facebook.com/hobbyseworange to keep up to date with everything going on in store!

Address: 221 Peisley Street, Orange, NSW 2800

Phone: (02) 6361 7420

Email: patriciajcole@gmail.com

7. Orange BELLA PATCHWORK DESIGNS

Where's Orange: About an hour's drive west of Bathurst, a perfect destination when heading across NSW.

Where in Orange: Unit 2, 25 Sale Street. The store's new location is larger and still centrally located in Orange, just off the Great Western Highway, with Kite Street as the closest cross street. The shop is in a large red-brick house, set back from the road, with lawn and beautiful flowers. There is plenty of parking.

Who plays host: Delma Watts

Worth visiting because: Bella Patchwork Designs is known for a large range of bright fabrics. People often comment to me on how lovely it feels to walk into the shop, with its big burst of colour. The first room is filled with Kaffe Fassett fabrics and kits, along with A Day in the Country fabrics, which I love, and the coordinated bias bindings are a real winner. The second room doubles as a class room and showroom, where I have a large range of wide-back fabrics, novelty prints and block colours. I enjoy all aspects of working with fabric, whether it's putting colours together, cutting out and ironing, putting kits together or any other part. I was brought up around colour and design, so I'm always happy to assist with this process if you need it. Sewing is a form of meditation and often lets us truly explore our own creativity, and I love sharing this bond with customers. The store is open weekdays from 10am-5pm and Saturdays from 10am-1pm.



What we recommend: You can see I love colour, and one of my quilt designs, *Persian Carpet* (above), shows you just how much. It is available as a kit with all fabrics to make quilt top and binding.

Address: Unit 2, 25 Sale Street, Orange, NSW 2800

Phone: (02) 6361 3399

Email: sales@bellapatchwork.com.au

Website: www.bellapatchwork.com.au

8. Orange HIDDEN TALENT

Where's Orange: Three hours west from Sydney over the beautiful Blue Mountains, through Bathurst and then to colourful Orange.

Where in Orange: 150 Lords Place. Coming from Sydney, turn left at Canobolas Hotel into Lord Place – we are just after the roundabout.

Who plays host: Carolyn and Marilyn with the help of casuals Kate, Elizabeth and Karen.

Worth visiting because: We have a very large range of patchwork fabrics, including the Jinny Beyer Palette. We carry Husqvarna, Janome, Elna, Singer, Baby Lock and Handi Quilter machines and overlockers, and a nearly full range of Accuquilt Go fabric cutters. We offer machine repairs, which are mostly carried out on the premises. Classes are held every weekday between 10am and 3pm (no appointment necessary), and we have a quilting service available. All bus groups are welcome, and we can open on Sunday by appointment only.

What we recommend: We have many kits already cut but are happy to cut others for you. We offer a unique service and allow plenty of time for new sewers to learn at their leisure. We're also passionate about teaching children, from seven upwards; some have won prizes. Our tutors have many years of experience in many avenues, including software classes for embroidery, so you will always be in the right hands when you visit.



Address: 150 Lords Place, Orange, NSW 2800

Phone: (02) 6362 0011

Email: carolyn_andra@optusnet.com

9. Katoomba THE STITCHING POST



Where's Katoomba: In the picturesque Upper Blue Mountains. It is one of the must-see destinations in NSW.

Where in Katoomba: Our beautiful shop is located in a lovely little yellow cottage on Lurline Street. Lurline Street is the main

tourist road that runs down to the famous Three Sisters and the World Heritage Blue Mountains National Park.

Who plays host: Karen owns the store and can be found there Monday to Friday, and on alternate Saturdays you will be greeted and looked after by Leisel and Marg.

Worth visiting because: When you visit, you'll be amazed by our eight huge rooms, one being a year-round Christmas room. We have a great fabric range, and specialise in reproduction fabrics and patterns and also stock a large array of needlework, specialising in antique reproduction samplers. Also, every August we run a needlework retreat at the beautiful, historic Carrington Hotel, and each October we run a very successful patchwork retreat up near Scenic World. 2015 will be our fourth year, and we are already starting to plan for 2016.

What we recommend: The first thing you notice when entering our spacious shop is the beautiful display of samples, fabrics and patterns. Not only do we have bolted fabric but we also have a large variety of fabric packs and kits. Needlework is also our specialty. We have a large array of samples on display.

Address: 100 Lurline Street, Katoomba, NSW 2780

Phone: (02) 4782 5809

Email: Karen@thestitchingpost.com.au

Website: www.thestitchingpost.com.au

10. *Glenbrook* POST OFFICE PATCHWORK



Where's Glenbrook: About 45 minutes' drive from Sydney's CBD, and just eight minutes past Penrith, Glenbrook village is located in the foothills of the beautiful Blue Mountains and is the gateway to the Blue Mountains National Park. It's a great place to wander, with a lovely cinema, cafes, gift stores and a beautiful central park – all within an easy five minute walk.

Where in Glenbrook: 33 Ross Street. We're opposite the nursery and 'The Church' cafe.

Who plays host: Judy Tyrrell and staff

Worth visiting because: We stock a diverse array of fabrics, including reproduction, modern and children's fabrics. We carry a lovely range of quilt and smaller-project patterns, Gutermann threads for machine and hand quilting, Madeira stranded embroidery floss and a good selection of haberdashery and sewing tools. We can arrange sewing-machine and overlocker repairs – just leave your machine at the shop. If you want to learn and expand your skills, we run weekly classes for students at all levels and the occasional workshop. Larger groups/bus tours are welcome, but please give notice first.

What we recommend: Drop in and be inspired by the quilts created by Rhonda Pearce, Anne Sommerlad, Di Tramontana and others. Challenge yourself and take on Rhonda's award-winning *Insanity Quilt*, choose another of our many lovely patterns and kits or simply select some gorgeous fabrics for your next project. We are always bringing in new fabrics and adding to our existing traditional ranges. There is something for everybody at Post Office Patchwork.

Address: 33 Ross Street, Glenbrook, NSW 2773

Phone: (02) 4739 9555

Email: popatchwork@eftel.net.au

Website: www.postofficepatchwork.net.au